



BX-4Gm Rev.A Specification

Version: V1.0 Release date: 2024.9.11

Catalog

Summary3

Feature3

Technical Specification4

Dimension illustrations5

Interface Diagram 6

Summary

The BX-4GM Rev.A module is used with a variety of BX six generation three primary color products. Integrated back insert welding, easy to install and use. Strong vibration resistance, suitable for vehicle LED display application environment.

BX-4Gm Rev.A module uses LTE Cat1 network as transmission medium, which is an industrial communication terminal based on mobile GSM short message platform and LTE data service.

Specially designed for use with BX six generations of three primary color series products.

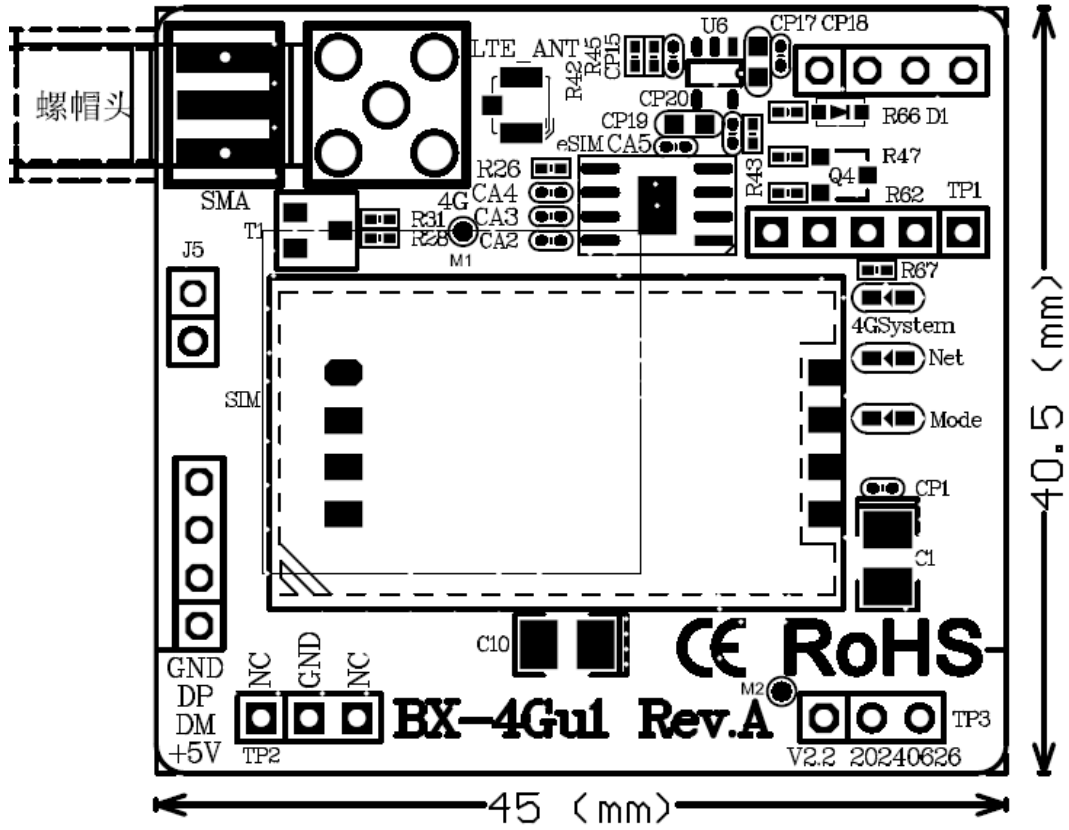
Feature

- ◆ Support iLEDCloud /iLEDSys cloud platform;
- ◆ Supports USB flash driveR configuration and SMS configuration.;
- ◆ Communication baud rate up to 460800bps;;
- ◆ The fastest boot 5 seconds can be online;
- ◆ Multiple hardware and software fault-tolerant design to ensure stable work to the greatest extent.

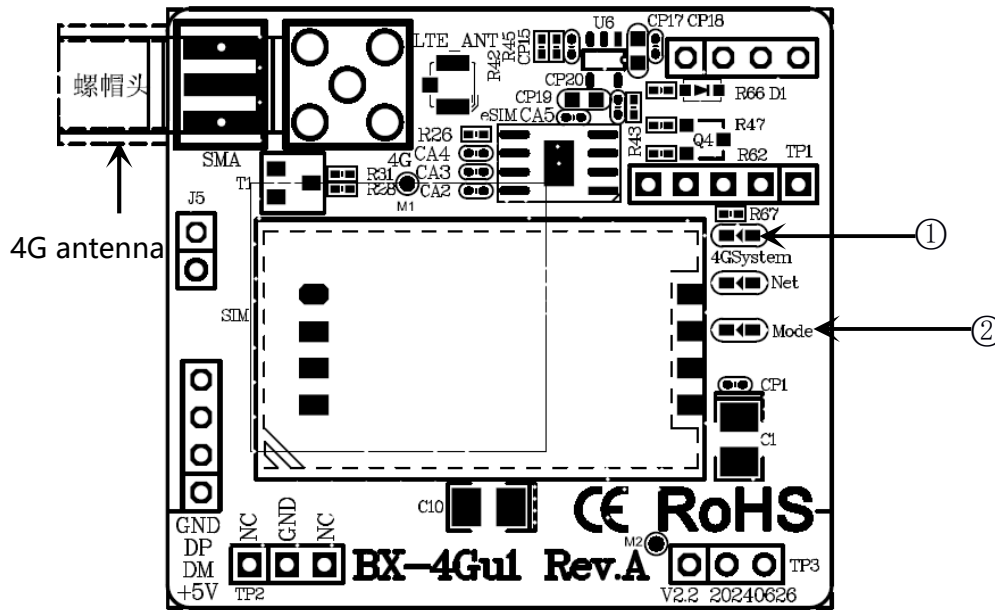
Technical Specification

- The online speed is rapid, and the fastest boot time is only 5 seconds to get online.
- Supported configuration modes: SMS / dedicated configuration software.
- It supports the general APN of China Mobile, China Telecom, and China Unicom, as well as the special APN of mobile operators.
- It supports the heartbeat signal and LTE connection indication.
- Operating temperature: -40°C ~ 80°C
- Operating voltage: 5V (3.5V ~ 5.5V wide operating voltage range)
- Rated power: ≤ 10W
- Multiple hardware and software fault-tolerant designs fundamentally solve the common faults of LTE.
- Baud rate communication is adaptive: up to 460800bps.

Dimension illustrations



Interface Diagram



Note: When used with a controller, the RS232 communication interface on the controller is internally occupied and cannot be used for external communication.

The indicator lights explain		
1	4G System	It shows a red light and is used as a status indicator for connecting to the server platform. It flashes every 5700ms, indicating that there is no SIM card; It flashes every 700ms, indicating that it is online; It flashes every 100ms, indicating that communication is in progress.
2	Mode	LTE indicator

Contact us

Shanghai ONBON Technology Co.,Ltd (Headquarters)

Address: 7 Floor, Tower 88, 1199#, North Qinzhou Road, Xuhui District, Shanghai City, China

Tel (wechat): +86-15921814956 +86-15800379719 +86-15850351852

Email: onbon@onbonbx.com

Website: www.onbonbx.com

iLEDCloud

Website: <http://www.iledcloud.com/>

